

## PITE 3980 Battery Load Bank



### Model No.: LB-1240 (110V/220V, 40A)

#### Typical application: Power Utility

**LB-1240** DC load unit is specially designed for discharge experiment, battery capacity test, battery maintenance, engineering examination and other tests for DC power with load. It is specifically designed for 110V and 220V battery system with max discharge current of 40A. This makes it applicable for battery discharge in the areas of Power Utility.

With its optional Data Acquisition Case (DAC), you will have a real-time monitoring for the whole process of discharge with wireless communication in PC.

#### Why PITE?

- 1) PITE 3980 has different customized models to meet exactly the requirement of customers from different industries.
- 2) Its optional data loggers enable a wireless communication with computer. And it will monitor the whole process of discharge including voltage of each cell.
- 3) Multi-functional for testing battery capacity and monitor different parameters.
- 4) Excellent performance with very good price.

#### Features

- ◆ Small weight, portable unit, convenient for onsite test
- ◆ Optional wireless DAC enables real-time PC monitor for measurement
- ◆ It sets 4 conditions for discharge auto shut-down:  
Discharge time, discharge capacity, string voltage and cell voltage
- ◆ Continued discharge available when previous discharge is stop abnormally
- ◆ Parallel connection of two units for higher discharge current
- ◆ Can work with other load banks for assistant discharge
- ◆ Can monitor measurement of other load banks or battery charger
- ◆ Accurate data measurement and vivid waveforms
- ◆ Auto sorting for lag-out batteries during discharging
- ◆ Safe circuits avoids damage to battery during measurement
- ◆ Powerful management software for data analysis and report printing
- ◆ Automatic protection upon over-heating and overload
- ◆ Thermal cut-off and automatic overload protection

#### Optional Data Acquisition Case (DAC)

DAC is for wireless communication with PITE 3980 main unit and PC. The new insulation-protected DAC is rugged and capable to measure all type of batteries (1.2/2/6/12V).

#### Its Connection:

One DAC could be connected with 12 cells of 1.2V, 2V or 4 cells of 12V (or 6V). Therefore, in different battery systems, they require different amount of DACs. With DAC, PITE 3980 and PITE PC software will be able to monitor and record voltage of each cell together with other parameter like String Voltage, Current, Discharge Capacity and so on.

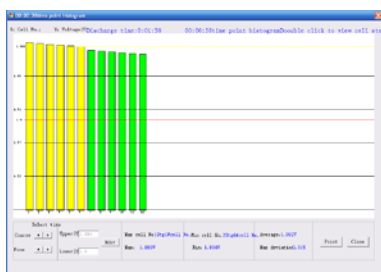
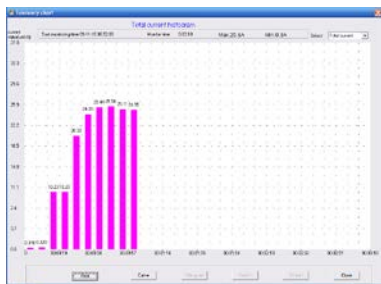


Optional DAC

In LB-1240 standard model, it contains 10 DACs for measurement of 2V/6V/12V or 2 DACs for measurement of 12V cells ONLY.

### Technical Parameters

Mains Voltage	AC 220V/110V, 50/60Hz; or DC from batteries
For battery type	1.2V, 2V, 6V and 12V
Discharging Current	Accuracy: 1%    Resolution: 0.1A or 0.5%
Discharge range	Voltage: 10V-126.5V (110V) 10V-253V (220V) Current: 0-40A
Voltage Accuracy	0.5%
Sampling Interval	5s –1min
Discharge pattern	Constant current discharge
Display	128*64 pixel LCD
Temperature	0°C~40°C
Humidity	5%~90% Relative humidity
Standard	CE marking, EMC standard
Dimension & Weight (main unit)*	560*202*355 mm (Size: M, 19kg)



PITE 3980 PC Software

### PITE PC Software

All standard load units of PITE 3980 come with PC software. With the software, you have a real-time data monitoring, analyze the testing data and easily print out the complete report.

For more customized battery load bank, please click [HERE](#).

**PITE TECH. INC.**

**ADD:** 4/F, Bldg A, Chiwan Industrial Park, Shaodi Rd., Shekou Area, Shenzhen China

**TEL:** +86-755-2680 5759 | **FAX:** +86-755-2688 0310

**Web:** www.pitotech.com | **Email:** sales@pitotech.com

