

PITE 3980 Battery Load Bank



Model No.: LB-2486 (24V/48V 600A)

Typical application: Telecom

LB-2486 DC load unit is specially designed for discharge experiment, battery capacity test, battery maintenance, engineering examination and other tests for DC power with load. It is specifically designed for 24V and 48V battery systems with max discharge current of 600A for both ranges. This makes it applicable for battery discharge in the areas of telecom.

With its optional Data Acquisition Case (DAC), you will have a real-time monitoring for the whole process of discharge with wireless communication in PC.

Why PITE?

- 1) PITE 3980 has different customized models to meet exactly the requirement of customers from different industries.
- 2) Its optional data loggers enable a wireless communication with computer. And it will monitor the whole process of discharge including voltage of each cell.
- 3) Multi-functional for testing battery capacity and monitor different parameters.
- 4) Excellent performance with very good price.

Features

- ◆ Small weight, compact, convenient for onsite test
- ◆ Optional wireless DAC enables real-time PC monitor for measurement
- ◆ It sets 4 conditions for discharge auto shut-down:
Discharge time, discharge capacity, string voltage and cell voltage
- ◆ Continued discharge available when previous discharge is stop abnormally
- ◆ Parallel connection of two units for higher discharge current
- ◆ Can work with other load banks for assistant discharge
- ◆ Can monitor measurement of other load banks or battery charger
- ◆ Accurate data measurement and vivid waveforms
- ◆ Auto sorting for lag-out batteries during discharging
- ◆ Safe circuits avoids damage to battery during measurement
- ◆ Powerful management software for data analysis and report printing
- ◆ Automatic protection upon over-heating and overload
- ◆ Thermal cut-off and automatic overload protection

Optional Data Acquisition Case (DAC)

DAC is optional for wireless communication with PITE 3980 main unit and PC. The new insulation-protected DAC is rugged and capable to measure all type of batteries (1.2V, 2V, 6V and 12V).

Its Connection:

One DAC could be connected with 12 cells of 1.2V, 2V or 4 cells of 12V (or 6V). Therefore, in different battery systems, they require different amount of DACs. With DAC, PITE 3980 and PITE PC software will be able to monitor and record voltage of each cell together with other parameter like String Voltage, Current, Discharge Capacity and so on.

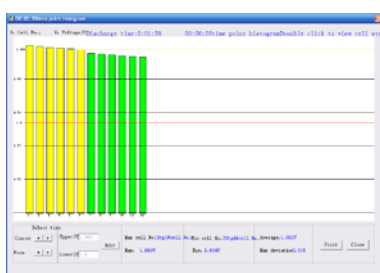
In LB-2486 standard model, it contains 2 DACs for measurement of 2V/6V/12V cells.



Optional DAC

Technical Parameters

| | |
|------------------------------------|--|
| Mains Voltage | AC 220V/110V, 50/60Hz; |
| For battery type | 1.2V, 2V, 6V and 12V |
| Discharging Current | Accuracy: 1% Resolution: 0.1A or 0.5% |
| Discharge range | 10V-55.2V (24V/48V): 12V: 0-300A 24V: 0-600A 36V: 0-450A 48V: 0-600A |
| Voltage Accuracy | 0.5% |
| Sampling Interval | 5s -1min |
| Discharge pattern | Constant current discharge |
| Display | 128*64 pixel LCD |
| Temperature | 0°C~40°C |
| Humidity | 5%~90% Relative humidity |
| Standard | CE marking, EMC standard |
| Dimension & Weight (main unit)* | 74x40x96cm (Size: XXL, 55kg) |



PITE 3980 PC Software

PITE PC Software

All standard load units of PITE 3980 come with PC software. With the software, you have a real-time data monitoring, analyze the testing data and easily print out the complete report.

PITE TECH. INC.

ADD: 4/F, Bldg A, Chiwan Industrial Park, Shaodi Rd., Shekou Area, Shenzhen China

TEL: +86-755-2680 5759 | **FAX:** +86-755-2688 0310

Web: www.pitetechnology.com | **Email:** sales@pitetechnology.com

