

Battery Tester

Model: BT3915

Regular maintenance and test is a “must-have” procedure for standby batteries. It is also recommended by IEEE latest standard for maintenance and testing of standby batteries. The excellent performance of BT3915 for testing cell internal resistance and voltage will help you eliminate the weak batteries and ensure their performance. Regular maintenance and test is a “must-have” procedure for standby batteries. It is also recommended by IEEE latest standard for maintenance and testing of standby batteries. The excellent performance of BT3915 for testing cell internal resistance and voltage will help you eliminate the weak batteries and ensure their performance



Technical Specifications

- Wide test range: 5~6000Ah, compatible for cell of 1.2V, 2V, 6V and 12V
- Smart and portable hand-held device, rugged and easy-to-go
- Colorful touch screen with optional operations of keyboard and touch screen
- Simultaneously test voltage and internal resistance/conductance
- Fast testing for battery and string in seconds with testing data auto saving
- Strong anti-interference in high current with stable and accurate performance
- Low testing frequency, effectively avoid interference from capacitive resistance
- Direct USB drive for software update and data transfer to computer
- Big memory for testing data storage of more than 3000 cells
- Buzzer alarm function and over voltage protection
- Auto-calibration function before testing enhances the testing accuracy
- Build-in reference value and self-defined value for comparison of testing result
- Retest and compensation function: any faulty operation or omission could be retested simply with one click
- Powerful software on PC to view the test data on many ways or export directly to Microsoft Excel

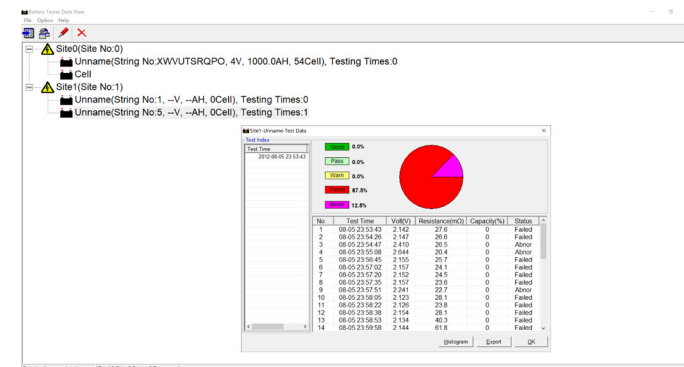
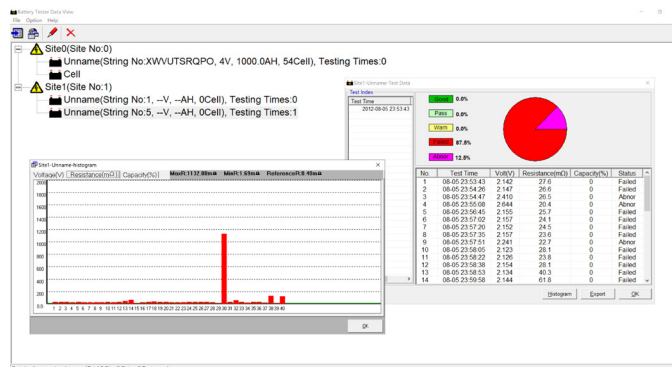
Voltage Range	0.000V-16V
Resistance Minimum Test Resolution	0.1 mΩ
Voltage Minimum Test Resolution	1 mV
Resistance Test Accuracy	±1.0%rdg±6dgt
Voltage Test Accuracy	±0.2%rdg±6dgt
Power Supply	Li-ion battery(7.2V 2400mAh)
Working Time	More than 5 hours
Measuring Data Memory	>3000 cells
Operation Environment	0°C to 40°C, 90% R.H
Measuring Cells Per String	1≤cells≤254
LCD Display	320*240 pixel, 3.5" TFT Screen
Net Weight	2 kg
Dimension	L210*W110*H60 mm

*The standard package come with Probe Pin and Test Clamp, you can use either of them to conduct your test conveniently



Data View Software

The included DataView software allows the user to upload test data from the provided USB drive. Then you can category and save the data on PC, view the data detail in form or Graphs or download it directly to Microsoft Excel



Site1--Unname Test Report

Type --V --AH
 Quantity 0cells
 Test Time 2012-08-05 23:53
 Tested by NOTE

String Status charts

Legend: Good (0.0%), OK (0.0%), Warn (0.0%), Failed (0.0%), Abnor (0.0%)

No.	Voltage(V)	Resistance(mΩ)	Capacity(%)	Status
34	2.181	26.4	0	Failed
35	2.184	26.9	0	Failed
36	2.184	26.2	0	Failed
37	2.184	22.5	0	Failed
38	2.189	124	0	Failed
39	1.802	1.49	21	Failed
40	2.292	121	0	Abnor
1	2.142	27.6	0	Failed
2	2.147	26.6	0	Failed
3	2.410	26.5	0	Abnor
4	2.644	26.4	0	Abnor
5	2.155	25.7	0	Failed
6	2.157	24.1	0	Failed
7	2.152	24.5	0	Failed
8	2.157	23.6	0	Failed
9	2.241	23.7	0	Abnor
10	2.123	28.1	0	Failed
11	2.126	23.8	0	Failed
12	2.154	28.1	0	Failed
13	2.154	40.3	0	Failed
14	2.144	61.8	0	Failed

Kit Includes

- BT3915*1
- Test Clamp*1
- Probe Pin*1
- Charging Adaptor*1
- USB Converter*1
- 4G USB Flash with software*1
- User Manual*1
- Packing List*1
- Carry Bag*1



CERTIFICATE



CERTIFICATE OF CONFORMITY

No.: EBO1804058-V151

The following product has been tested by us with the listed standards and found in conformity with the European directive EMC 2014/30/EU.

Applicant: PITE TECH. INC.

Address: 4/F, Bldg A, Chiwan Industrial Park, Shaodi Rd., Chiwan, Shekou Area, Shenzhen, China

Manufacturer: PITE TECH. INC.

Address: 4/F, Bldg A, Chiwan Industrial Park, Shaodi Rd., Chiwan, Shekou Area, Shenzhen, China

EUT: BATTERY TESTER

Model No.: PITE 391X(X=0-9)

Test Report No.: EBO1804058-E150

Sufficient samples of the product have been tested and found to be in conformity with

Test Standards: EN 61326-1:2013
EN 61000-3-2:2014
EN 61000-3-3:2013

The test report was carried out from submitted type samples of a product in conformity with the specification of the respective standards. The CE mark as shown below can be used, under the responsibility of the manufacturer, after completion of an EC Declaration of Conformity and compliance with all relevant EC Directives.


 Kevin Wang
 Laboratory Manager
 Issue Date: May 23, 2018

CE


 DUE DATE: 2021-05-23

Shenzhen EBO Testing Center
 A508, Financial port building, Xin'an Sixth Road, 82nd District, Bao'an, Shenzhen, China.
 Tel: 86-755-33126608 ebo@ebotest.com www.ebotest.com